



**MEGA FORTRIS**  
G R O U P

## **SECURITY SEAL**

# **MINI CABLE LOCK 250 (MCL 250) & MEGA CABLE LOCK 250 2B (MCL 250 2B)**

**Pull-Tight Barrier Seal**

***Sleek and simple locking mechanism for absolute security.***

Mini Cable Lock 250 is a fully steel made high-security cable seal designed to secure high-value asset. The Mega Cable Lock 250 2B version includes two locking bodies for a single length of wire. This version is designed for longer cable lengths and provides greater strength and security. Both versions comply to ISO 17712 and CTPAT with a precisely designed locking mechanisms.

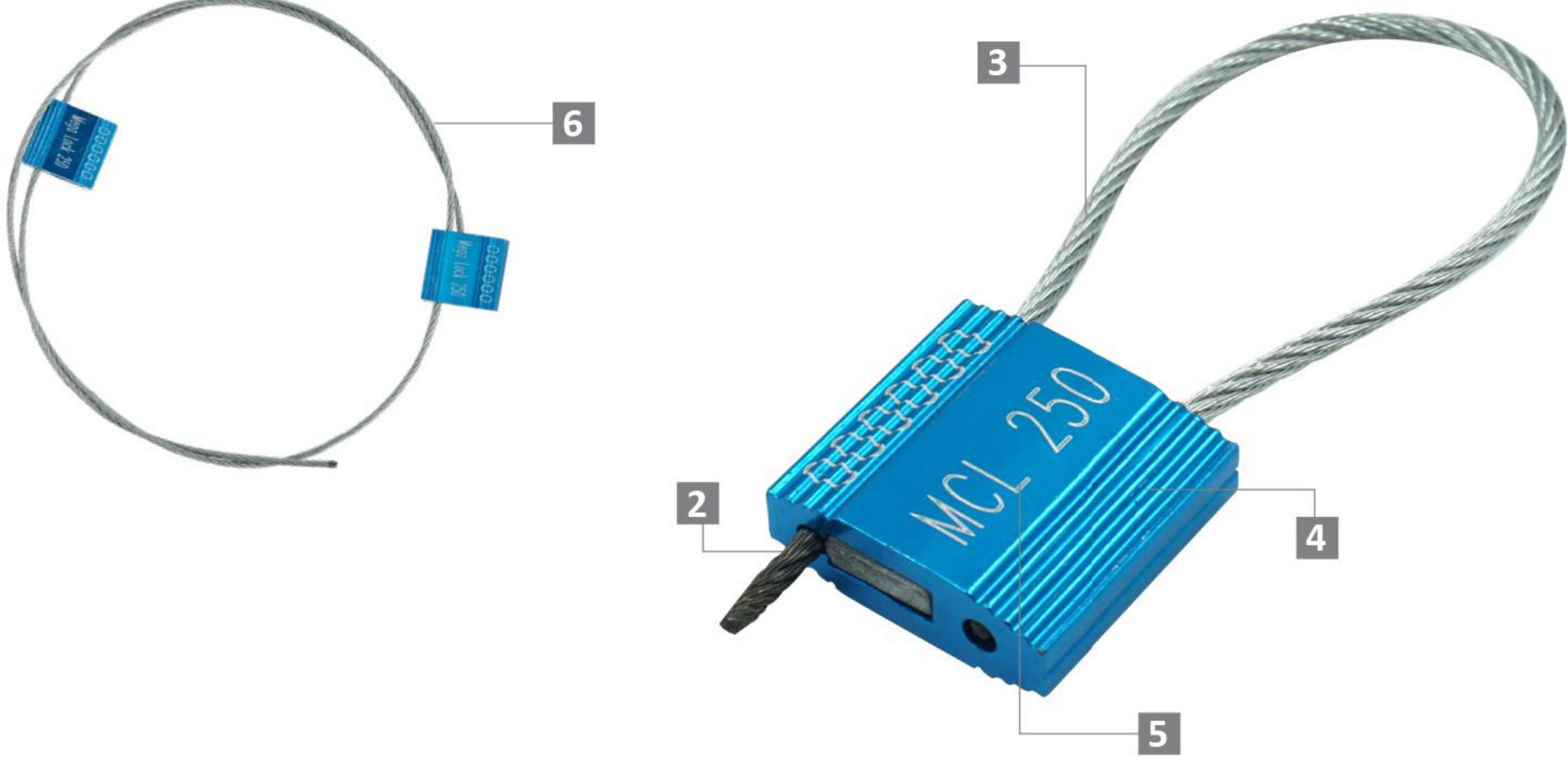
### **Applications:**

- Valve Sealing
- Retail Applications
- Logistics
- Banking

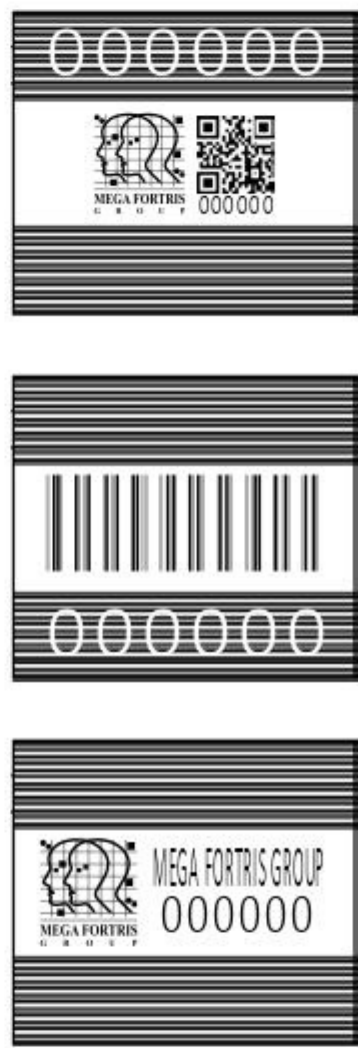
**PREVENTION • PROTECTION • PEACE OF MIND**



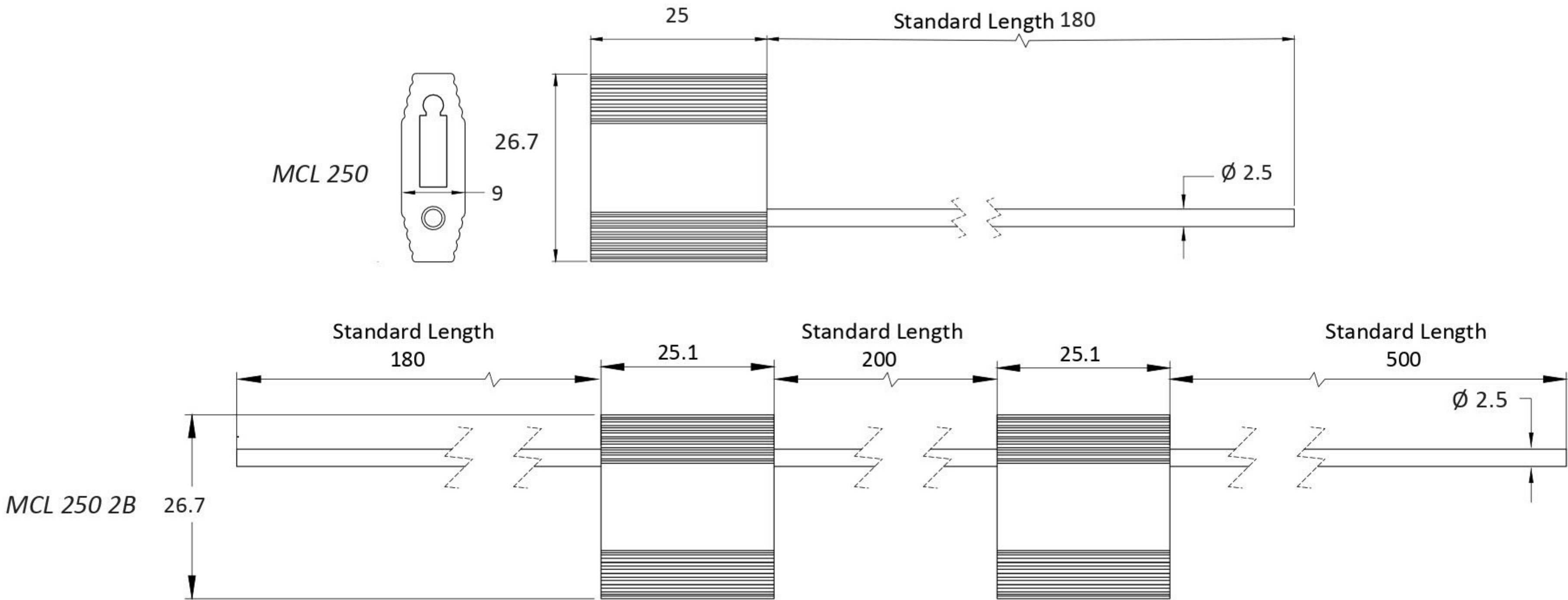




LASER MARKING OPTION



- 1 The Mini Cable Lock 250 consists of aluminium body, and steel wire that is pulled to tightly secure assets and provide clear tell-tale signs of tampering.
- 2 One-way locking mechanism is embedded for fast and easy application.
- 3 The non-preformed galvanised steel wire unravels upon cutting, hence showing clear tamper evidence.
- 4 The rib exterior of the aluminium body is designed to protect the laser markings during rough handling with anodisation of solid colour for colour coding.
- 5 Irreversible identifiers such as name, logo, barcode, serial number and QR code are laser-marked on the aluminium body.
- 6 Mega Cable Lock 250 2B features two locking bodies and extra length steel wire for additional security and locking adaptability.



TECHNICAL SPECIFICATIONS

\*Customisable cable length upon request.

PRODUCT - MEDIUM CABLE LOCK250 (MCL 250) & MEGA CABLE LOCK 250 2B (MCL 250 2B)

Code	Material	Cable Length	Cable Diameter	Tensile Strength	Marking Area	Max Marking Digits
MCL 250	Body : Aluminium Cable : Galvanised Steel Wire	180 mm (7.1 in)	Ø 2.5 mm (0.1 in)	≥350 kgf (≥771.6 lbf)	0.9 x 21 mm (0.03 x 0.8 in)	Serial no : 6 Barcode : 7
MCL 250 2B		880 mm (34.6 in)				

PACKAGING

Carton	Quantity	Dimensions (mm)	Gross Weight (kg)	Volume (m³)	Standard Colours
MCL 250 Inner	600	450 x 250 x 135 (17.7 x 9.8 x 5.3 in)	12.5 (27.6 lb)	0.015 (0.5 cu.ft.)	Body : <span>G</span> <span>R</span> <span>B</span> <span>BK</span> <span>GD</span> <span>SC</span> For colour customisations, kindly contact us for further information.
MCL 250 2B Inner	60	300 x 270 x 160 (11.8 x 10.6 x 6.3 in)	7.0 (15.4 lb)	0.013 (0.5 cu.ft.)	

Carton size and weight vary according to cable length. Figures shown in the table are for the standard cable length packaging. Please contact us for additional details.

Updated Date : 21 January 2021